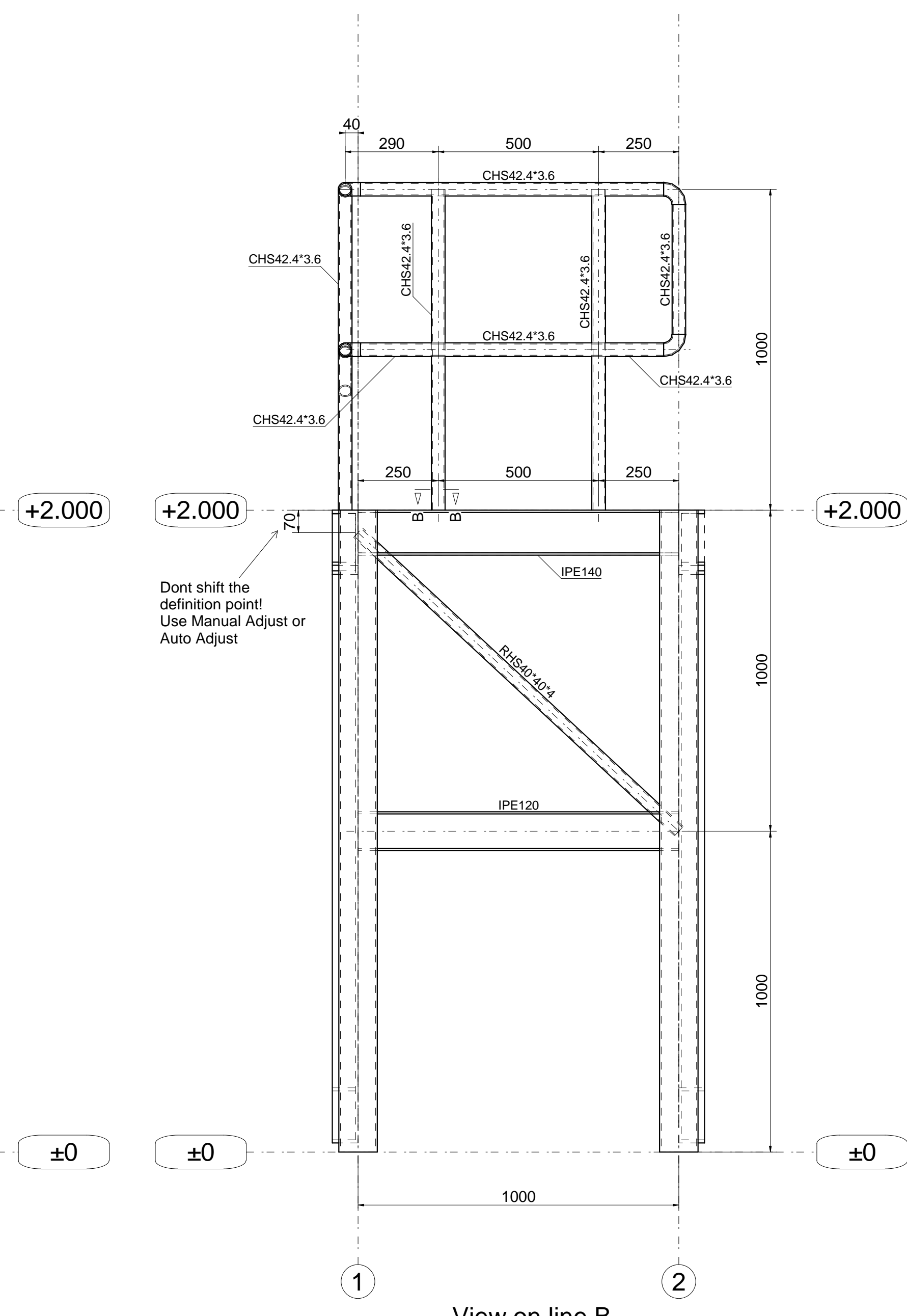
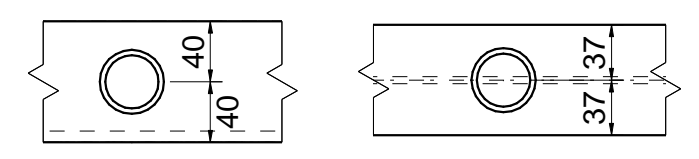


View on line 1

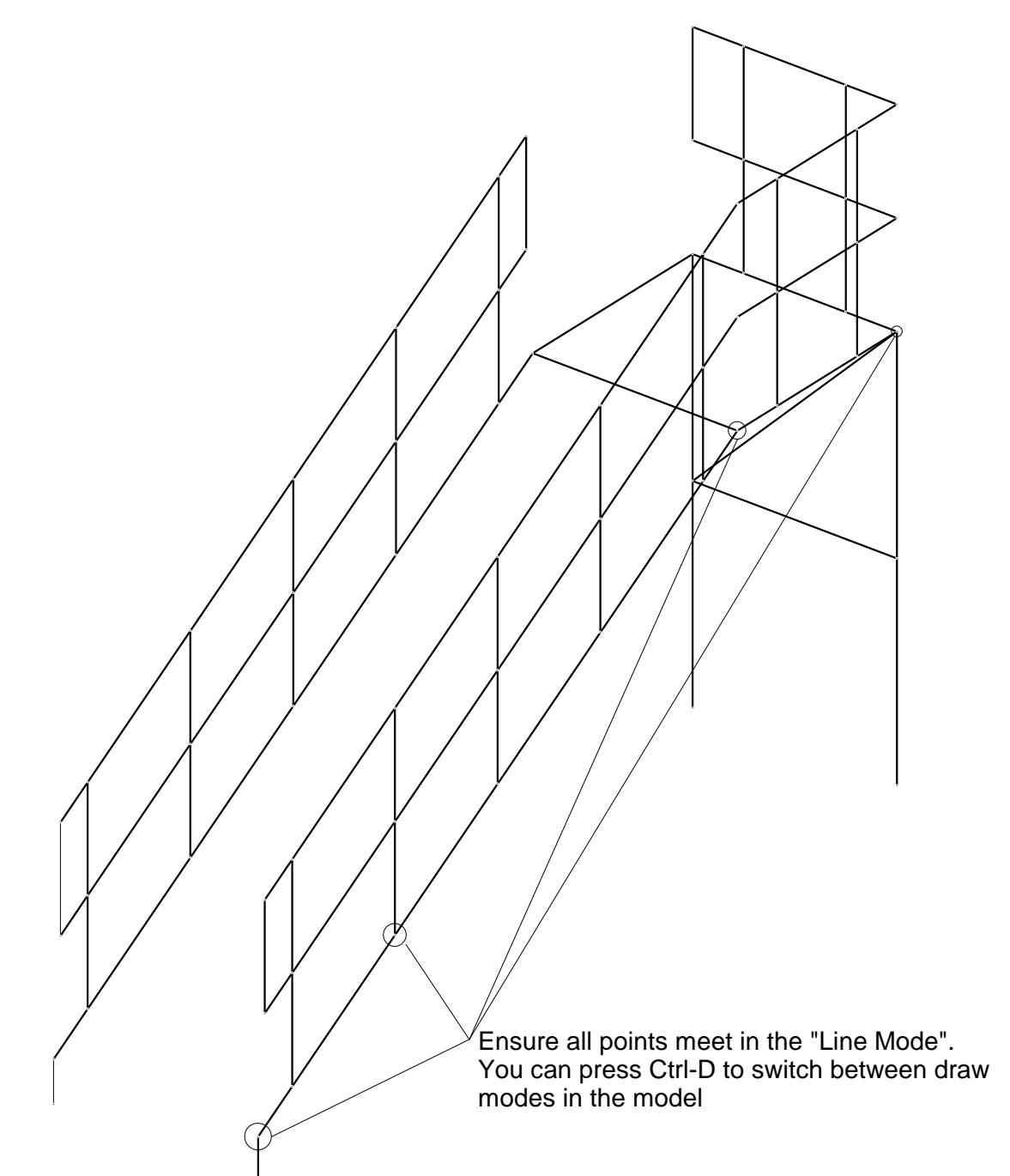


View on line B

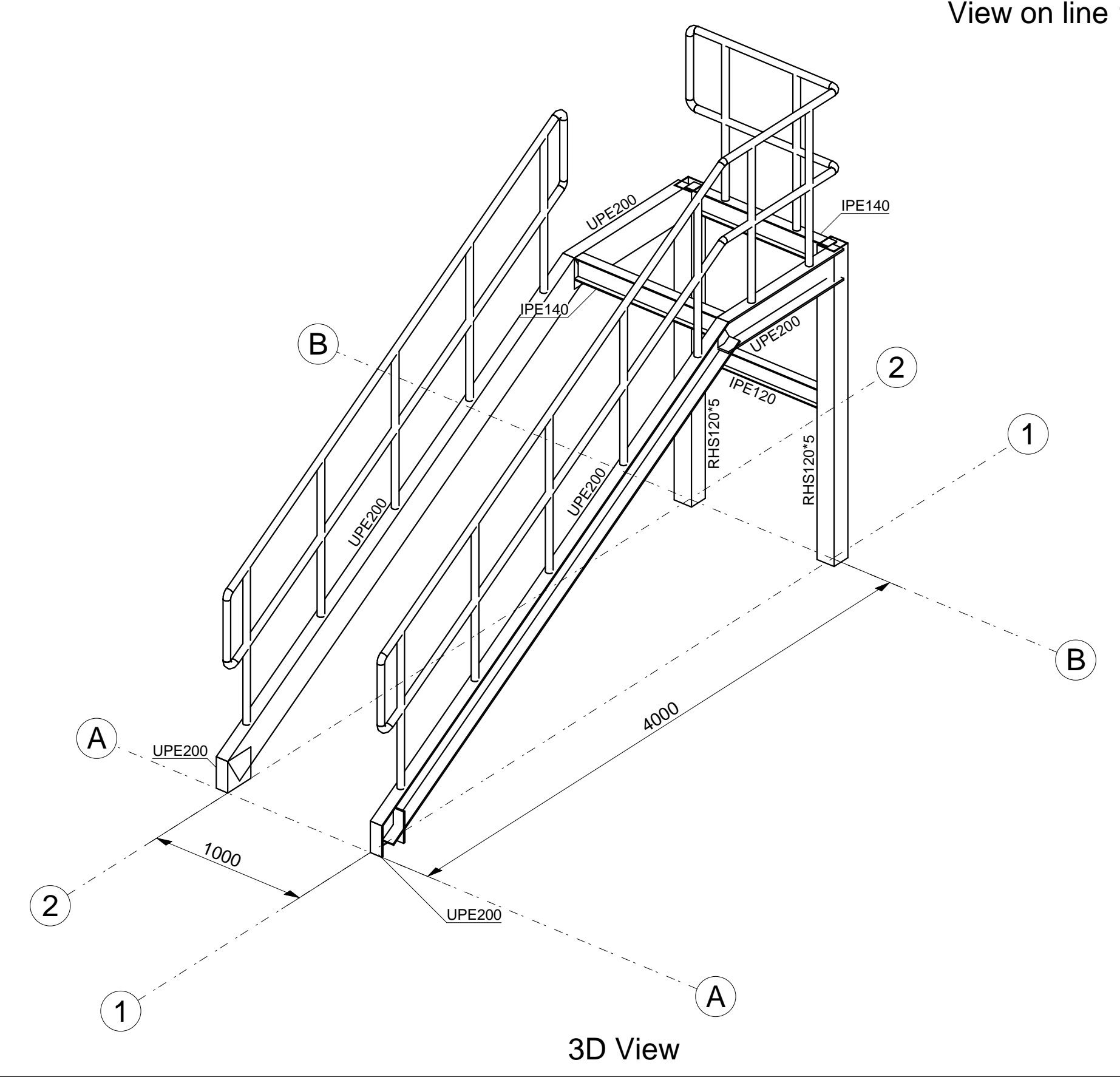


A - A

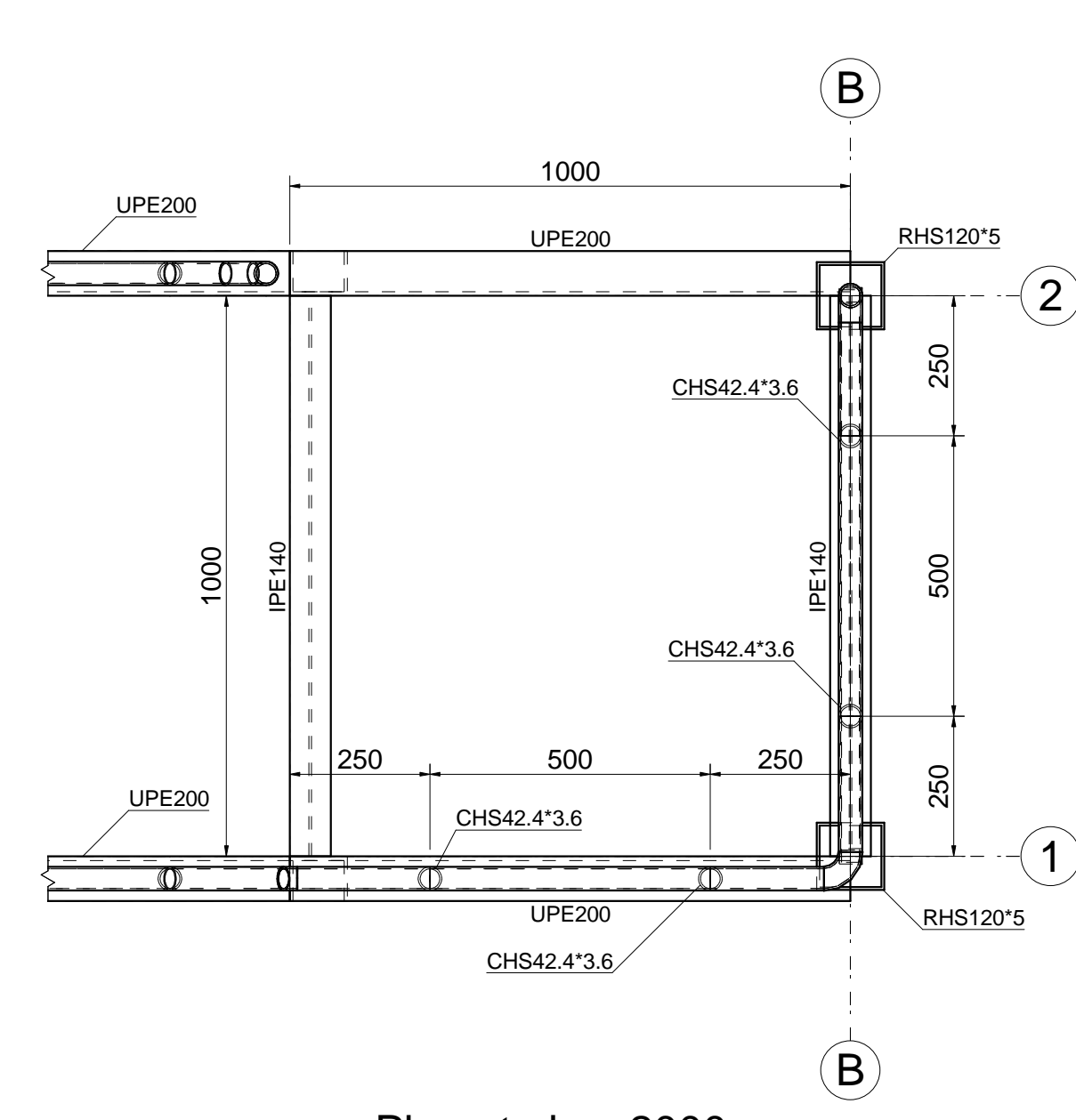
B - B



Ensure definition lines meet



3D View



Plan at elev. 2000

Model the stringers and handrail elements as shown.

1. No need to model the elbows connecting the handrails. Just ensure working points are correct.
2. Stanchions are placed in the middle of the stringers as shown in sectional views
3. The working point of the vertical brace is shifted 70mm down to the middle of the beam
4. Assume reasonable values for information not provided.
5. All materials are S235
6. Make sure the model is connected in the Line mode view as shown and profile definition lines meet each other. The actual 3d positions will be adjusted using offsets as usual.
7. You can watch the tutorial video here. <https://youtu.be/XUIEUlthUoU>